

TECHNICAL BULLETIN: Pre-Installation Customer Guidance Information

Dear Customer,

Please note the following Pre-Installation Guidance Information which we hope will be useful to you in terms of our collective efforts to plan for the completion of Right First Time appliance installations on your developments

Gas Hobs

If you are supplying a service hatch, please ensure the supply pipework is located at the bottom of the hatch. This ensures fewer connections are required to run the pipework to the hob. This is a safer method and looks better for the occupier.

All Hobs

All hobs must have correct clearance when being installed. The most common issue is the clearance from the back of the hob to the rear finished surface. The distance is specifically stated in the manufacturer instructions and should be checked by the trade completing the hob cut-out. If changing splashbacks, please ensure the minimum distance is still adhered to.

Wet Services

Wet connections should always be in an adjacent unit. They must not be behind the appliance. This prevents adequate testing of connections. Wet connections must be located within 500mm of the appliance. Some appliances hoses can be disconnected and replaced with a longer hose. However, not all appliances' hoses can be removed, and some hoses have an aqua stop and cannot be replaced with a "normal" hose. If you are installing 600mm worktops on wet runs you will need to ensure a hard-wired connection is available or a socket in the adjacent unit.

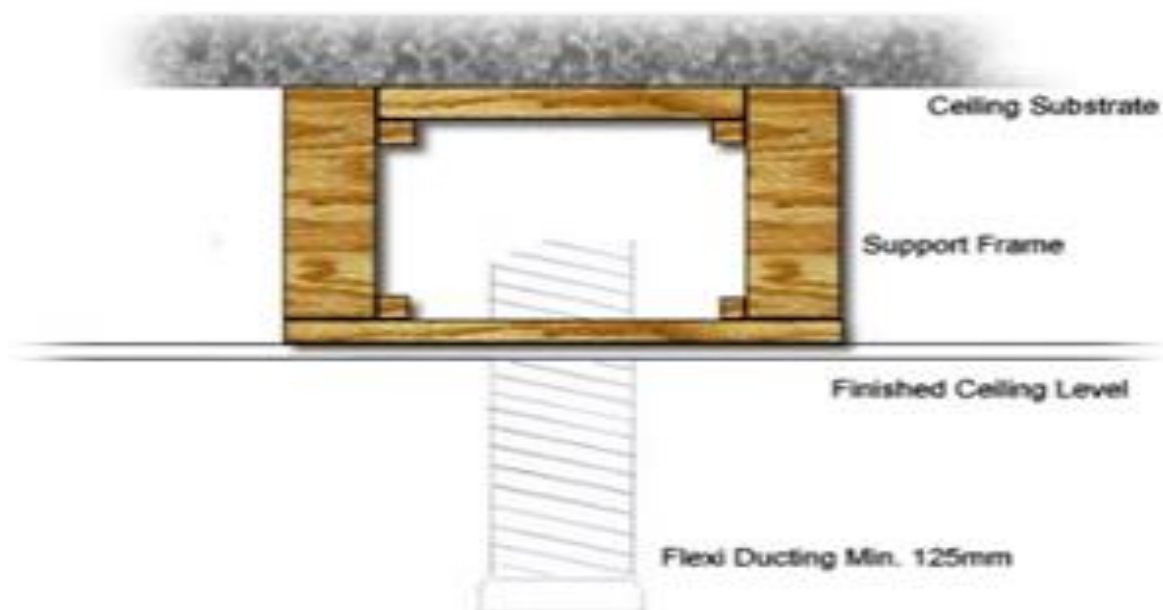
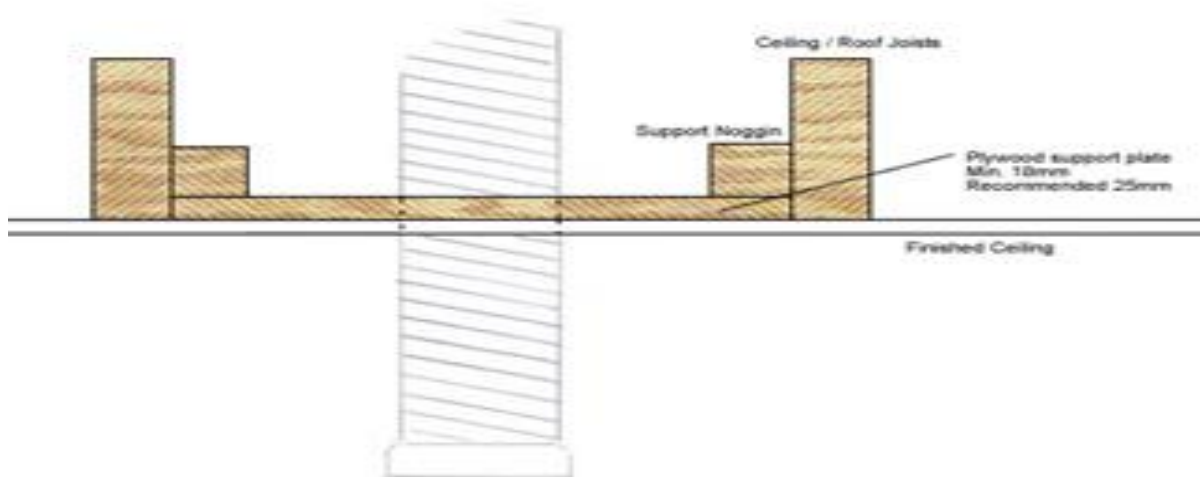
Electrical Connections

The below table shows acceptable electrical connections for the appliance you are having installed. Manufacturer's Instructions will state a recommended connection which we suggest your M&E contractor is aware of and adheres to as this can differ to the below. Some ovens are supplied with a cable and in these instances the Manufactures Instructions would need to be followed.

<i>Elect Rating</i>	<i>Maximum Fuse Rating at the Point of Connection</i>	<i>Min Cable Size</i>	<i>Connection Point</i>	<i>Protection at Consumer Unit</i>
<i>Up to 750W</i>	3 Amp	1.0mm ² Flex	Socket or Fused Outlet	16A – 32A
<i>750W – 2.9kW</i>	13 Amp	1.5mm ² Flex	Socket or Fused Outlet	16A – 32A
<i>3kW – 4.6kW</i>	No fuse at point of connection	2.5mm ² Flex	20 Amp unfused outlet	20A
<i>4.7kW – 8kW</i>	No fuse at point of connection	4.0mm ² Flex 6.0mm ² T+E	35 Amp Cooker Outlet	32A

Island Hoods

If you are having Island hoods – they must be supported in one of the below methods (ceilings supported by joists and suspended ceiling respectively)



All Hoods

Manufacturer instructions will highlight the size of ducting required for the effective and efficient operation of the hood, generally this is 150mm (however check for hood you are having supplied). Advise us if you are having re-circulated or ducted out hoods so we can make sure you are supplied the correct parts for the hood.

The hood has fixing points which can only be installed in a certain point in the wall for the hood to sit at the correct height. Therefore it is recommended cables/pipes are not run directly behind these fixing points to prevent risk of these being drilled through during installation.

If ceilings are standard 2.4m it is unlikely there will be any issues with the hood installation. However, if more or less the hood may not be compatible so please let us know of any non-standard ceiling heights.

Refrigeration

All built in refrigeration requires ventilation for its proper operation. Usually 200cm² is required at the bottom and the top of the cabinetry to allow air flow around the appliance.

Recommended

Ensure that your M&E, plumbing and KFM contractors are aware of the appliance spec being installed in advance to ensure your kitchen is correctly prepared for the specific requirements of each appliance.

Martin Appleyard
Group Operations Director

Owner:		Martin Appleyard
Filename:		Technical Bulletin (External) Ref No. 013– Pre-Installation Customer Guidance Information
Location of Document:		SharePoint/H&S/5.Compliance/Technical Bulletin (External)
Date:		1-February-2023
Status:		Issued
Version:		1.1